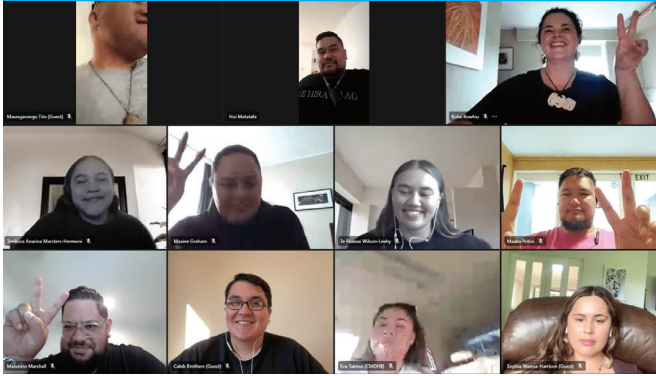


# KAAPUIA

Poutuuterangi 2023



## PAANUI



Kia tukuna ko aua takutaku whakawhetai ki te runga rawa e tauwhiro nei i a taatou i ngaa waa katoa. Maahora ana ngaa whakamaanawa ki a Kiingi Tuheitia e noho mai raa i te ahurewa tapu i whakarerea e oona maatua tuupuna, Paimaarire.

Welcome to the third issue of the Kaapuia paanui to keep Te Whakakitenga o Waikato and kaimahi of our entities abreast of the progress of the

**Te Whakakitenga o Waikato** is the governing authority of Waikato-Tainui that protects and advances the collective interests of the iwi. Its role, first and foremost, is to uphold, support, and strengthen the Kiingitanga. It is the tribal parliament of Waikato-Tainui and serves as the representative body for 68 Raupatu marae. Every three years elections are held, and marae have the opportunity to elect two people to represent their collective voice on Te Whakakitenga o Waikato. The next elections will be held in the latter part of 2023. The chair of Te Whakakitenga o Waikato is Parekawhia Mclean.

**Te Arataura** is the executive board of Te Whakakitenga o Waikato. Te Arataura is made up of 10 members who are appointed by Te Whakakitenga o Waikato and one member appointed by the Kahui Ariki. Members of Te Arataura are appointed for three-year terms. They are responsible for overseeing the implementation of the tribe's strategic plan, which aims to promote Waikato-Tainui members' social, cultural, environmental and economic well-being. The chair of Te Arataura is Tukoroirangi Morgan.

future-focused review that aims to build the cultural, social, environmental, and economic legacy of Waikato-Tainui.

After holding the last of our stakeholder engagement waananga to provide a platform for our future leaders to share a their view and whakaaro about Whakatupuranga 2050, we have now concluded stage two of the stakeholder engagement process. The third step involves developing recommendations which sponsors of the review and Board chairs will be provided for comment before a final proposal is delivered to Te Whakakitenga o Waikato for their consideration.

While we appreciated the input of a cross-section of rangatahi at the future view waananga, what was clear was that there were different levels of understanding of how the current Waikato-Tainui group structure works.

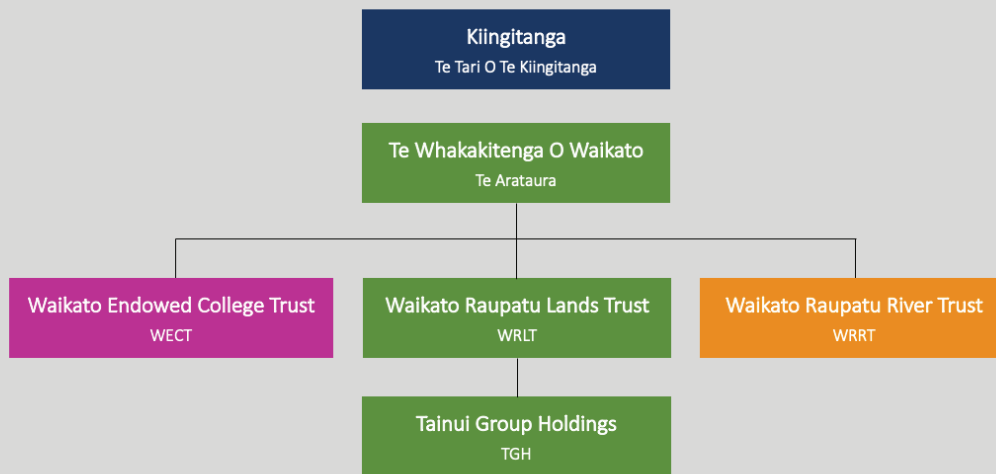
Therefore in this paanui, we will provide an overview of each entity under review starting with Te Whakakitenga o Waikato.

**The Waikato Raupatu Lands Trust (WRLT)** was created by the Waikato-Tainui Raupatu Claims Settlement Act 1995 and is the social arm of the iwi. It manages the distributions for the collective benefit of over 80,000 registered tribal members. The Waikato Raupatu Lands Trust was established for charitable purposes, income is distributed in education, health and well-being, marae, social and cultural development. The CEO is Donna Flavell.

**Tainui Group Holdings (TGH)** is the commercial arm of Waikato-Tainui, with the responsibility to protect and grow the commercial assets of the iwi. TGH was established in its current form in 2003 and began with an endowment of property valued at \$179.7 million. TGH now manages around \$1.7 billion of assets for Waikato-Tainui. Major projects currently include the development of the 490-hectare Ruakura Superhub, and two projects nearing completion: a new head office for ACC in central Hamilton and Te Arikiniui Pullman Auckland Airport Hotel (with joint venture partner Auckland International Airport Ltd). TGH provides an annual dividend to distribute to the Waikato Raupatu Lands Trust for charitable purposes. The Chair of Tainui Group Holdings is Hinerangi Raumati Tu'ua and the CEO is Chris Joblin.

## Current Organisational Structure

“Te Kiingitanga me te Hanga o tō tātou Whare...”



The vision of Sir Robert Te Kotahi Mahuta for the Waikato-Tainui College for Research and Development was realised in February 2000. The college was modelled after Wolfson College, where Sir Robert studied at Oxford University. He fell in love with the international and post-graduate academic community there, which represented the best minds of the time, and he wanted to replicate that here. Several initiatives to develop the College have occurred over the last two decades; however, the College was placed into recess last year while new strategies to reopen were developed. Dr Marama Muru-Lanning is the Chair of the **Waikato Endowed College Trust**.

The 2008 River Trust Deed established the **Waikato Raupatu River Trust**. It was responsible for pre-settlement river operations, agreements, bylaws, and environmental policy. In 2017, it merged with the Waikato Raupatu Lands Trust, however, it still exists as a Trust.

That is a brief overview of the current structure that we have been asked to review as the Kaapuia Komiti, and we would like Te Whakakitenga o Waikato representatives to share this widely with your marae, hapuu, and whaanau so that they understand what we have in place and how we can reorganise our whare to serve future generations best.

As we come to phase three of the Kaapuia review, the Komiti will soon be in the process of reviewing and evaluating the structural recommendations. This mahi will take place over the month of April, with several key check-in points to ensure that the structure that is proposed to Te Whakakitenga o Waikato adequately reflects the feedback received through the stakeholder engagement stage of the project.

The Komiti has confirmed with EY Tahī the evaluation criteria in which all recommendations will be filtered through. Below is an overview of the three confirmed criteria; affirming, differentiating and qualifying.

### 1. Affirming

- People Focus
- Future Proofing
- Building Legacy
- Upholds and imbues Ngaa Tikanga O Te Kiingitanga

### 2. Differentiating

- Structure that best reflects our needs and aspirations.
- Responsive to cultural, social, economic, and environmental needs.
- Actively invests in and develops a plan of succession to key roles.

### 3. Qualifying

- Protects the tribal asset base.
- Ensures a durable structure and optimal use of resources.
- Respects the authority of Te Whakakitenga and the Mana O Ngaa Marae.

In our next paanui, we will update you on the high level insights received through the various waananga held. These insights will drive the review forward into recommendations.

### **Ngaa manaakitanga**

**Tania Martin**  
**Kaapuia Komiti Chair.**